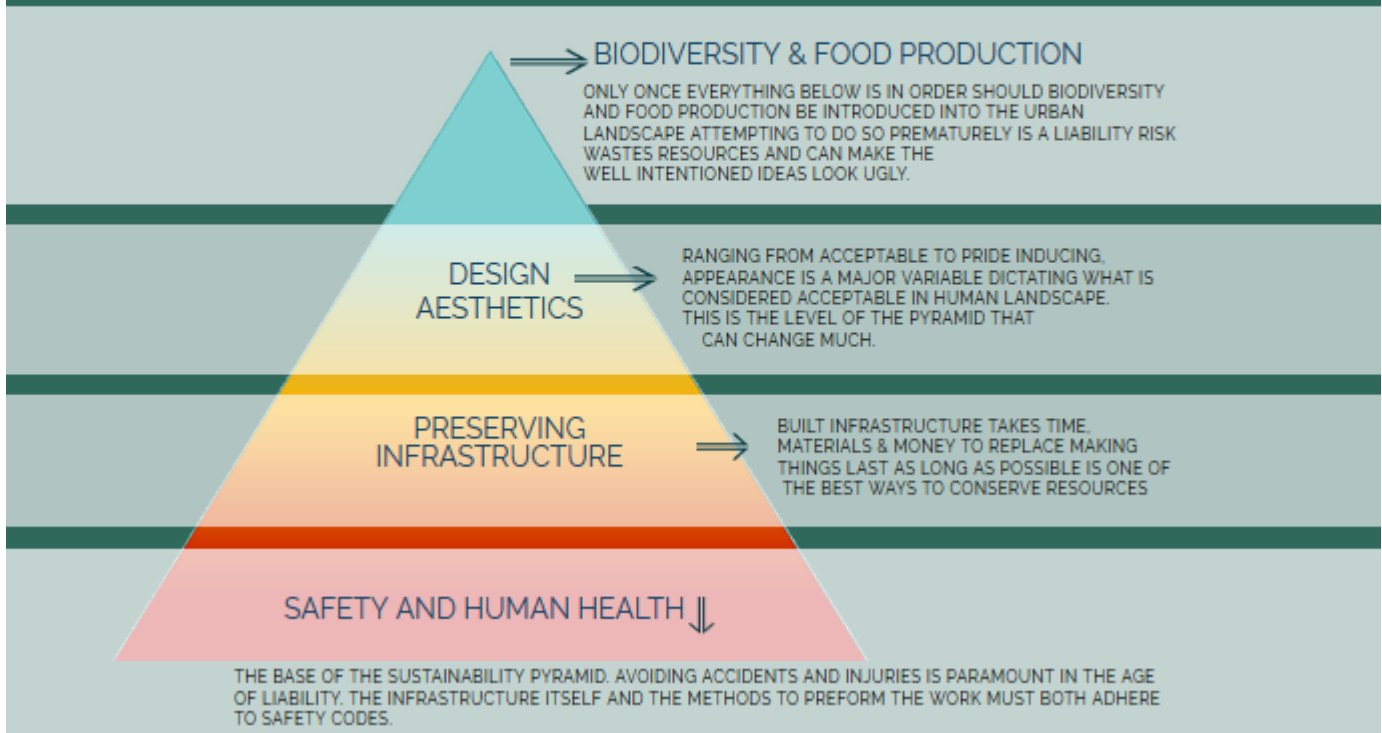


UNDERSTANDING THE ENVIRONMENT

© Josiah Clark
Consulting Ecologist
Habitat Potential

The Underpinning Tenants for Sustainability in Human Dominated Landscapes- Josiah M.T. Clark



THE UNDERPINNING TENANTS OF SUSTAINABILITY IN HUMAN DOMINATED LANDSCAPES by: Josiah Clark, Consulting Ecologist at Habitat Potential Copyright 2019

1.) SAFETY AND HUMAN HEALTH

Safety and Health are the base of the sustainability pyramid.
Avoiding accidents and injuries is paramount in the age of liability.
The infrastructure itself and the methods to perform the work must both adhere to safety codes.

2.) PRESERVING INFRASTRUCTURE

Built infrastructure takes time, materials and money to replace. Making things last as long as possible is one of the best ways to conserve resources.

3.) DESIGN AESTHETICS

Ranging to acceptable to pride inducing, appearance is a major variable dictating what is considered acceptable in the human landscape. This is the level of the pyramid that can change much.

4.) BIODIVERSITY AND FOOD PRODUCTION

Only once everything above is in order should biodiversity and food production be introduced into the urban landscape. Attempting to do so prematurely is a liability risk, wastes resources and can make the well intentioned ideas look ugly.